



# The Apostle

## St. Paul's Episcopal Church

390 Main Street  
North Andover, MA 01845  
Ph: (978) 683-0671  
www.stpaulsnorthandover.com  
stpaulsna@comcast.net

### Sunday Schedule:

8:30 Holy Eucharist, Rite I  
9:45 Church School & Nursery  
10:00 Morning Prayer or  
Holy Eucharist, Rite II

### Rector

The Rev. Stephanie Chase Wilson

### Staff

Rene Heron  
*Office Manager*  
Ed Stauff  
*Music Director*  
Sue Johansson  
*Church School Director*  
Lenore Schmidt  
*Assistant Church School Director*  
Don Porter  
Rusty Porter  
*Sextons*

### Vestry

Tracy Wakeman  
*Senior Warden*  
Bob Zimmerman  
*Junior Warden*  
Peter Kalafarski  
*Treasurer*  
Michelle Hardcastle  
*Clerk*  
Gabriella Browne (2013)  
Donna Gorzela (2013)  
Jerry Kent (2013)  
Susan Johansson (2012)  
Mike Laorenza (2012)  
Loren Carlson (2012)  
Bruce Jensen (2011)  
Laura McKenna (2011)  
Cheryl Means (2011)

## The True Valentine

February is upon us and our thoughts turn to love. For most of us we look to St. Valentine as the inspiration for love, however, there is another saint whose leadership in this area we might consider. St. Bernard of Clairvaux lived in 11th century France and wrote about what he called the "Four degrees of love." According to Bernard each human being had a predictable evolution of how they understood and expressed love. Each "degree" of love was richer and closer to God than the next, and evolved as our spiritual lives grew deeper.

### The Four Degrees of Love

- 1) **Loving self for self's sake.** "This kind of love means loving oneself selfishly"
- 2) **Loving God for self's sake.** "It is good for us to know how little we can do by ourselves, and how much we can do with God's help, and therefore to live rightly before God, our trusty support."
- 3) **Loving God for God's sake.** "Once this is recognized it will not be hard to fulfill the commandment touching love to our neighbors, for anyone who truly loves God loves all God's creatures. Such love is pure, and finds no burden in the command... Whoever loves like this, loves as he is loved, and no longer pursues his own desires but Christ's... Whoever praises God for his essential goodness, and not merely because of the gifts he has given, truly loves God for God's sake, and not selfishly." In other words, chooses to love God's desires over self's desires.

(Continued to Page 2)

*(Continued from Page 1)*

- 4) **Love of Self for God's Sake.** "To lose yourself even for an instant, as if you were emptied and lost and swallowed up in God — this is not human love; it is heavenly... And real happiness will come, not in gratifying our desires or in transient pleasures, but in accomplishing God's will for us. This is what we pray every day: 'Thy will be done in earth as it is in heaven.'... To reach this state is to become godlike... As a drop of water poured into wine loses itself, and takes the color and savor of wine... so for those who are holy all human affections melt away by some incredible mutation into the will of God." In other words, our desires and God's desires become one. We probably can't attain this degree in this life.

For Bernard, our true Valentine is a love of self for God's sake. We are created to be at one with the Almighty. It is our purpose. We are loved and cherished by God whether we attain that union or not, but our very creation and purpose assures us that we are deeply valuable to God. We cannot help but love what God has created, namely ourselves. "God has made all for his own glory" [Isaiah. 43.7]. You are worthy of love because you are created to be united with God. You are valuable. Claim that love!

- Stephanie +

\* Quotes are Bernard's, modernized and abridged by Stephen Tompkins. Edited and prepared for the web by Dan Graves. <http://www.chitorch.org/index.php/eras/medieval/bernard/>

## **Episcopal Relief & Development – Haiti**

If you would like to contribute to the ongoing relief efforts in Haiti, Episcopal Relief and Development is doing wonderful work down there. There is a strong Anglican presence in Haiti so the church has many connections and can get the aid to those who need it. You may donate online at [www.er-d.org](http://www.er-d.org), or call 1.800.334.7626, ext. 5129. Checks can be mailed to Episcopal Relief & Development, PO Box 7058 Merrifield, VA 22116-7058, and marked "Haiti Fund" on the memo line.



## ***Stewardship***

I'm sure you are all aware that Stewardship is a year-round effort and should be a part of our daily lives. It encompasses so much of daily living, not only stewardship to our church, but it also becomes a measure of our caring for our selves, family, community, nation and planet.

A parishioner prepared the following article as a statement of his commitment to St. Paul's and is included here in the February *Apostle* as a reminder that there are parishioners yet to pledge. We can't stress the importance of making that commitment. If you need a pledge card, just call the office. Of course we are concerned with the dollar amounts but establishing the routine of an annual pledge is more important. If you haven't yet pledged, please do so!

### **Witness Statement by Mike Laorenza**

What does St. Paul's mean to me? As a member of the vestry I was asked to write a "witness statement". I was asked to complete this task four weeks ago and as I considered my statement I came back to that simple question..."What does St. Paul's mean to me?"

Every time I pondered the question the answer came easily, though it surfaced in a different form each time. For instance, during a recent service I looked around at so many parishioners who have become friends, who responded when Nancy's brother passed away,

who ask about my cousin Carmen who suffers from ALS, who have enjoyed the successes of our children, who have shared in many aspects of our lives.

During the run up to the fair I witnessed people respond in unison to the different needs announced by Ray or Dianne each week. During fair set up people came out of the woodwork at the last minute to complete a job that started with Jack Smith and John Brunette staring at each other at 9:30 in the morning. The actual fair is a showcase for our sense of community, complete with good nature and a sense of commitment.

My frequent drives through town bring me past our precious sanctuary, parish hall and rectory, which house our devoted pastor and her beautiful family. Further downtown walks still the gentleman in the collar who is our retired pastor.

What does St. Paul's mean to me? It means we are a parish of believers in our faith, friendship, community, and ourselves. It means we are people who respect God and reach out to others around us, who need us. Lastly, it means that we must always remember to honor and protect our home of worship. Please consider these and other aspects of St. Paul's that are important to you as you consider the weeks ahead.

### **Church Master Calendar**

If you are planning an activity at the church, a group meeting or setting up for an event, please put the event in the church master calendar. You may do so by contacting Rene in the church office. We have had instances of two groups wanting to use the same room at the same time. The calendar helps clear up these confusions. Thank you!

## Thank you to all who have pledged!

Below are the names of all who have pledged for the 2010 calendar year as of January 31<sup>st</sup>. Your generous support allows us to plan our worship, programs, and ministries for the new year. Thank you!

If you have pledged but your name is not on the below list, please let the church office know right away so we may clear up the confusion. If you have been meaning to pledge but haven't gotten around to it, it's not too late! Please ask Stephanie or the church office for a pledge card. A pledge does not lock you into an amount. If your circumstances change, you may change your pledge.

And remember - whether you pledge or not, you are a beloved member of our congregation!

Dean Bostock  
Bea Bradley  
Kathy Brown  
Gabrielle Brown & John Nissenbaum  
Celia & John Brunette  
Elizabeth Buturlia & Elizabeth Woodhouse  
Stacey & David Cameron  
Lillian Carlson  
Dee & Loren Carlson  
Melinda & Tom Coppa  
H. Jerome Crampton  
Alexander Daley  
Mark & Lori Daniele  
Fred & Amy Dellachiaie  
John Deshler  
Linda Doherty  
Phyllis & Robert Dulude  
Skip & Susan Dunigan  
Dave & Anne Edwards  
Fred & Diana Emrich  
Jack & Christine Erle  
Dan & Gail Farmer

Amy & Paul Ferguson  
Paula & Jim Fines  
Donald Foss  
Dawn & James Fraser  
Art & Lillian Fundeklian  
Eydie Gaul  
Lane Goss  
Jane Green  
Mary Ellen Grelle  
Ralph Griswold  
Keith & Amy Harley  
Christine Herrmann  
David and Leona Hollins  
Jeff Hollins  
Joyce Hollins  
Bruce & Corky Jensen  
Susan Johansson & Peter Valpey  
Leslie & Peter Kalafarski  
Muriel Katschker  
Jerry & Kellie Kent  
Jean & Tom Kooken  
Carrie & Dan Leary  
Sylvia Little  
John & Judith Livesy  
Edith Mahon & Carlos Garcia  
Betsy & Charles Marshall  
Bill & Laura McKenna  
Dave & Cheryl Means  
Susan & Dick Miller  
Carrie & Joe Nissi  
Rosemary Peelle  
Debbie Ramirez  
Lenore Schmidt  
Diane & Ray Shaw  
Jack & Marlene Smith  
Susan & John Sullivan  
Mildred Summers  
Linda & Paul Swartz  
Audrey Taylor  
Ken & Joan Veznaian  
Willy & Marti Vicens  
Brad & Wendy Wakeman  
Tracy Wakeman  
Velma Wakeman  
Joyce & Al Washington  
Betty Watson

Ruth Whittier  
Gail Wilkes  
Stephanie Chase Wilson  
Ray & Linda Winter  
Phyllis & Bob Zimmerman  
Katie Zimmerman



## Outreach Committee News

### Food Glorious Food

All of the pantries in our greater community continue to struggle with a need for food! When you are out shopping for your family, please consider picking up ANY additional non-perishables for our neighbors who are in need. There is a basket in the back of the left side as you enter Church, clearly marked "Food Donations", for you to deposit them or contact Cheryl Means, Outreach Committee Chair at [threemeans@aol.com](mailto:threemeans@aol.com) for pick up. All donations are appreciated and picked up by Lazarus House or Neighbors In Need weekly. Thank You!

### February Toiletry Collection

The People's Pantry, is a North Andover organization located in The North Parish Church, was founded in response to the need for emergency supplemental groceries as well as clothing and personal care items (when available) for people affected by economic problems. In 2009; 12,148 individuals were served at The People's Pantry.

This time of year lotions, chap stick, deodorants and shampoo would be greatly appreciated by their guests. Please consider purchasing one or two of these essential personal hygiene products for those who need them and would greatly appreciate them.

All donations will be delivered to The People's Pantry at the end of February. There is a basket in the back of the left side as you enter Church, clearly marked "February Toiletry Collection", for you to deposit them or contact Cheryl Means, Outreach Committee Chair at [threemeans@aol.com](mailto:threemeans@aol.com) for pick up. Thank You!

Cheryl Means  
Outreach Committee Chair



Thanks to the generosity of so many parishioners, as well as donations from ECW, Outreach and St. Paul's Faire, 20 children in the Merrimack Valley received Christmas gifts of clothing, toys, gift cards and personal items this year. This was more than anticipated! The gifts were received and distributed by Christmas Kids of the Merrimack Valley with great gratitude. Thank you for all your kindness.

Marti Vicens

## Do You Like Books?

If so, you might enjoy checking out Episcopal Books and Resources online at <http://www.episcopalbookstore.org>, or call 800-903-5544. Some recent suggestions include,

“Hope Matters - The Untold Story of How Faith Works in America” By: Calhoun, John A.

“Stones into Schools - Promoting Peace with Books, Not Bombs, in Afghanistan and Pakistan”

By: Mortenson, Greg; The Healing of America - A Global Quest for Better, Cheaper, and Fairer Health Care By: Reid, T. R.; “A Celestial Omnibus - Short Fiction On Faith” By Maney & Hazuka; “Other Voices, Other Worlds - Global Church Speaks Out on Homosexuality” by: Brown, Terry; “Episcopal Life’s Guide to Retirement & Financial Planning” By Episcopal Life.

## Lenten Suppers with Faith Lutheran

We will continue our annual Lenten suppers with Faith Lutheran Church of Andover. Our churches will meet together at alternating churches every Wednesday during Lent for supper and worship, beginning Wednesday February 24th. The supper is at 6:00 p.m. and the worship is at 7:00 p.m. This is a great opportunity for us to build ties with other parts of the Body of Christ. All are welcome! The schedule is below:

February 24 - Faith Lutheran  
March 3 - St. Paul's  
March 10 - Faith Lutheran  
March 17 - St. Paul's  
March 24 - Faith Lutheran



I am beginning the planning phase for a custom hymnal supplement for St. Paul's. This booklet will contain hymns, songs and service music that we use regularly and that isn't in The Hymnal 1982. Copies will live in the pews next to the regular hymnals, thereby reducing the number of bulletin inserts. (We will, of course, adhere to applicable copyright laws.)

If you're interested in helping with this project, please let me know and I'll put you on the mailing list. The first tasks will be determining the content, format and binding.

Thanks!  
Ed Stauff    [ed@mewsic.com](mailto:ed@mewsic.com)

## Do You Want to Know What's Going On in the Episcopal Church?

For information about what's happening around the country and around the world visit [www.episcopalchurch.org/ens/](http://www.episcopalchurch.org/ens/). Or subscribe to online Episcopal News Service by sending a blank email message, from the address which you wish subscribed, to [join-enslist@epicom.org](mailto:join-enslist@epicom.org) and include "subscribe" in the subject line.

## Center for the Study of Jewish-Christian-Muslim Relations

North Andover is fortunate to have a world-class center for the study and relationship of these three Abrahamic faiths. The Center's presentations and conferences are open to the public. Below is a list of the next upcoming events. For more information call 978-837-5428 or visit [www.merrimack.edu/JCM](http://www.merrimack.edu/JCM).

- Thursday, February 4, 7-9 p.m. "Augustine on Jesus the Jew". Prof. Paula Fredriksen, Aurelio Professor of Scripture at Boston University.
- Tuesday, March 16, 2-3:30 p.m., "13<sup>th</sup> Annual Merrimack College Passover Seder" Rabbi Robert Goldstein presiding.
- Thursday, April 8, 7-8 p.m. "Program in Remembrance of Victims of the Holocaust"



### Thank You!

To all those who helped make the Christmas & Epiphany Pageants possible, children and adults. Great job!

Thanks to the Altar Guild for the beautiful Christmas altar.

To Ray Shaw for leading the Lesson and Carols Service on December 27 and for preaching on January 31<sup>st</sup>.

## Transitions – Congratulations!

**Ordination** – Leigh Vicens, daughter of Willie and Marti Vicens and sister to Carrie Leary, was ordained to the Episcopal Priesthood on Saturday, January 30, 2010 in Madison, WI

**Baptisms**- Mark Albert Daniele, Jennifer Ann Daniele, Andrew William Daniele, and Kevin Michael Daniele were received into the household of God on Sunday, January 10, 2010 at St. Paul's.

**Birth** - Connor Thomas McLoughlin, son of Megan Jensen & Tom McLoughlin and the grandson of Coralie & Bruce Jensen, was born January 11, 2010.

### Engagements –

- Stephanie Chase Wilson and William Bradbury, who will be married on April 24, 2010.
- Gregory Johnson and Ellen Geretz, who will be married in the summer of 2010.



## February Birthdays

Sam Laurenza	Feb 2
Marlene Smith	Feb 2
Leigh Melchin	Feb 3
Carrie Leary	Feb 4
Patricia Splaine	Feb 8
Mike Godsil	Feb 9
Joseph Nissi	Feb 11
Lillian Carlson	Feb 14
Fred DelleChiaie	Feb 14
Francis Taylor	Feb 16
Phyllis Zimmerman	Feb 18
Owen Ferguson	Feb 22
Kristofer Johansson-Valpey	Feb 24
John Adams	Feb 28



## Finance Committee News

### Finance Committee News

The revenue and expense for December and the twelve

months appear below. These results are still being analyzed and may change slightly before being finalized. December was a very good month for revenue. Thank you for catching up your outstanding 2009 pledge and in some cases prepaying your 2010 pledge. And thank you for your very generous Christmas offerings. Overall, our disbursements for the year were \$1,500 greater than budgeted and revenue was \$11,000 higher than budgeted.

Looking ahead to the budget for 2010, the Vestry has approved a conservative budget with a deficit of about (\$57,000). We will have to draw on our Fidelity funds to “bridge” the budget gap again in 2010 – but, the leadership of the parish continues to look for every opportunity to maximize our resources and utilize them as efficiently as possible.

If you have any questions, comments or suggestions for the Finance Committee please contact Jean Kookan.

## Summary of Finances and Budget as of December 31, 2009

	Month of November	Year to Date
Operating Income	\$ 31,234	\$188,418
Operating Expenses (Paid & Accrued)	<u>\$ 22,851</u>	<u>\$240,323</u>
Budget Excess (Shortfall)	\$ 8,383	\$(51,905)
Transferred from endowment	\$ 0	\$ 50,000

### Parish Discussion on Same Gender Marriages

There have been some questions, concerns, rejoicing, and misinformation about the Bishop's recent statement permitting same gender marriages in the Episcopal Church. Your rector and vestry would like to hear your thoughts about this issue. We as a parish will meet after the 10 a.m. service on Sunday February 7<sup>th</sup> for a discussion. Lunch and childcare will be provided.

## Listing of February Service Readings

### February 7, 2009

Isaiah 6:1-8, [9-13]

Psalms 138

1 Corinthians 15: 1-11

Luke 5:1-11

### February 14, 2009

Exodus 34:29-35

Psalms 99

2 Corinthians 3:12-4:2

Luke 9:28-36, [37-42a]

### February 17, 2010 (Ash Wednesday)

Joel 2:1-2, 12-17

2 Corinthians 5:20b-6:10

Matthew 6:1-6, 16-21

Psalms 103

### February 21, 2009

Deuteronomy 26:1-11

Psalms 91:1-2, 9-16

Romans 10:8b-13

Luke 4:1-13

### February 28, 2009

Genesis 15:1-12 17-18

Psalms 27

Philippians 3:17-4:1

Luke 13:31-35

## Thank You Notes for St. Paul's Faire Donations

St. Paul's has received thank you notes from the following agencies for our donations from the Christmas Faire proceeds. If you would like to view these wonderful thank you letters, they are posted on the Bulletin Board in the Parish Hall hallway next to the Church Office.

**Bread and Roses, Lawrence, MA**

**Esperanza Academy, Lawrence, MA**

**Si, Se Puede, North Andover, MA**

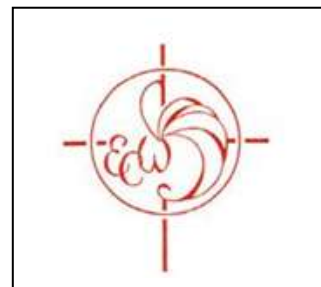
**Women's Resource Center, YMCA,  
Haverhill, MA**

**Daybreak Shelter, Lawrence, MA**

**Merrimack Valley Housing**

**Communities Together, Lawrence, MA**

**North Andover Council on Aging**



## Episcopal Church Women

Hold the date: The next ECW meeting is **March 1<sup>st</sup>**. Think Spring while making your own live flower arrangement with help from Kathy Holland of Holland's Florist of Bradford. Meeting begins with a cooperative meal at 6:30 p.m. Please bring food to share. Hostesses: Corrine Hall, Betty Watson, and Linda Schrader. All women in the parish are welcome at ECW meetings.



### **SPARE CHANGE SUNDAY**

The first Sunday of every month is SPARE CHANGE SUNDAY

The loose change given in the plate benefits our Church School youth's **Heifer Project** ministry

More information is available on

#### **The Heifer Project**

during Coffee Hour on SPARE CHANGE SUNDAY



### **St. Paul's Parish Chili Cook-Off and Cookie Bake-Off**

**Save the Date: Saturday, March 27<sup>th</sup>  
5:00 PM**

The ECW is once again sponsoring our annual chili cook-off and cookie bake-off for an evening of fellowship and friendly competition!

Enjoy chili entries in 5 categories (Vegetarian, Mild, Medium, WOW! & Unconventional) as well as cookie and bar entries in 3 categories (Traditional, With Nuts, & Unconventional).

Sign up sheets and entry forms will be available in the Parish Hall beginning Sunday, Feb. 7<sup>th</sup>, during coffee hour. For more info, contact Sue Rogers at 978-658-7441 or [jollyrogers6@verizon.net](mailto:jollyrogers6@verizon.net).

All-u-can-eat salad, nachos & salsa, mac and cheese & chili!

\$5.00 for adults and  
\$3.00 for children under 10.



## **Coffee Hour**

This past year has seen a good increase in volunteers for coffee hour. We've had just about every week filled with hosts/hostesses who have shared in this fellowship with friendly greetings and great treats. Thanks so much to all of you who have stepped up and contributed to this. For anyone who's been a bit shy about hosting, I encourage you to give it a try! It is a great way to meet or reconnect with people we see every week.

Currently, we are a bit short of hosts, so please sign up. Coffee supplies and paper goods are supplied; you need only bring snacks and cream. There is an instruction sheet to guide you through the process, and I'd be happy to walk you through the process. You may reimburse yourself through contributions for any expenses.

If you have any questions or would like to sign up, please contact Joan Veznaian@978-475-9190, or email [joanievez@yahoo.com](mailto:joanievez@yahoo.com).

## ST. PAUL'S CHURCH SCHOOL

To teach St. Paul's children and their families . . . about God's love for us In Christ . . . through  
. . . Scripture, Worship, and Community

In January the youth brought to our worship serve the story of the Epiphany, a simple story with such an amazing message. Three wisemen who traveled so far to worship our Lord Jesus. Great job kids!

We had a first Movie Night on January 8th, where nine children attended. We all had a great time. We are looking to see more of you attend our next movie night with games added to fun.

Looking ahead:

St. Paul's 2nd Movie & Game Night: Friday, February 12th, 6:00 to 9:00

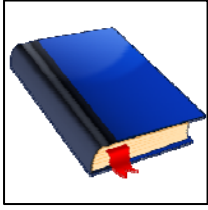
Need a night out, bring your kids to St. Paul's where you know they will be safe. There will be a movie for the young and one for the older youth. Popcorn and drinks to be served.

If the kids need to be fed we will order pizza and ask for a donation. We will be meeting downstairs in the classrooms.

Come join in the fun, kids!

May Gods Blessings be with you,  
Susan Johansson  
Lenore Schmidt

**PLEASE BE SURE TO CHECK OUT THE BULLETIN BOARD LEAVING THE PARISH HALL FOR EVENTS AND SIGN-UP SHEET.**



## St. Paul's Women's Book Group

All women of the parish are welcome to our book group

meetings! Our meetings are always held on the third Thursday of the month (except December) from September through May. We do not meet in December. We meet at 7:00 p.m. in the French Memorial for discussion and refreshments are served. All women of the parish are welcome. Food, fun, and conversation! Newcomers welcome!

The remaining months of the schedule for 2010 are as follows:

- February 18 - Pope Joan by Donna Woolfolk Cross - novel
- March 18 - In the Beauty of the Lilies by John Updike - novel
- April 15 - Driftless by David Rhodes - novel
- May 20 - The Big House by George Howe Colt - non-fiction

If you have any questions, please contact Chris Herrmann at herrmanncc@aol.com ~ 978-687-3982 or Stephanie Wilson at spaulsnalector@comcast.net ~ 978-683-0671.



## St. Paul's Memorials For February 2010

### February 7:

In loving memory of Donald B. Foss

Donor: Donald B. Foss, Susan H. Sullivan, and Michael T. Foss

In loving memory of Curtiss O. Wakeman  
And Velma & Irving Hinton

Donor: The Wakeman Family

In loving memory of Leonard Shipp

Donor: David & Leona Hollins & Family

### February 14:

In loving memory of

Josephine F. & Edwin C. Katschker

Donor: Muriel Katschker

In loving memory of

Mr. & Mrs. George J. Reid

Donor: Griffith Memorial Fund

### February 21:

In loving memory of Mrs. Florence E. Bevin  
& Mr. Samuel H. Bevin

Donor: Mr. & Mrs. Albert Washington

In loving Memory of Dierdre Busby Flowers  
And William S. Flowers

Donor: Linda & Norton Busby

### February 28:

In loving memory of

Mr. & Mrs. Robert F. Daley, Mr. & Mrs.

Robert L. Daley & Mrs. Lansdale Daley  
Gardiner

Donor: The Rev. Alexander Daley



## St. Paul's Prayer List

### For Healing

April DiDomenico  
Sylvia Little  
Bea Bradley  
Ronald DeAngeles, Jr.  
Dorothy Hammond  
Albert Washington  
Phoebe Muhr  
Edna Krzywicki  
Charles Pina  
Fran Hogan  
Ed Hogan  
Frances Grelle  
Pat Grelle  
Mary Ellen Grelle  
Marc Glinos  
Jennifer Coffin  
Elizabeth Ann Ginder  
Carmen Laorenza  
Lori Daniele  
Rodney Valliere  
Lilo Burtscher  
Rony Grant  
Lee Grant  
Kathy Brown  
Fred DelleChiaie  
Tommy Holland  
Mike Coakley

### For those in the Service

Sean Nolan  
Joseph Salman  
Kyle Burke  
Jonathan M. Velishka  
Jonah Shotter  
Matthew D. Bailey  
Andrew Shaw



## Support our Troops!

### Addresses of Our Service Men and Women currently serving:

1st Lt. Bailey, Matthew D.  
111 Hekili Street  
Suite A, PMB 359  
Kailua, HI 96734 05753  
[Matthew.Bailey@mnf-wiraq.usmc.mil](mailto:Matthew.Bailey@mnf-wiraq.usmc.mil)

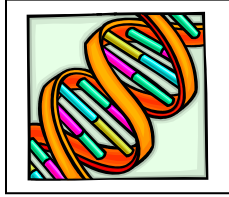
SSgt. Jonah Shotter  
HHC 4-25 ABCT  
FOB Salerno  
APO AE 09314

Major Jonathan M. Velishka  
1101 Hetherington Loop  
Fort Sill  
Lawton, OK 73503

2nd Lt. Tyler Johnson  
US Marine Corps  
[tyler.usmc@gmail.com](mailto:tyler.usmc@gmail.com)

Senior Airman Andrew Shaw  
234 Grinding Wheel Drive  
Dover, DE 19904

Capt. Kyle Burke  
TF ODIN-A / TF THUNDER  
FOB Bagram  
APO, AE 09354



## Parish Ministry Links

### Church Wardens

Senior Warden – Tracy Wakeman  
[naswarden@comcast.net](mailto:naswarden@comcast.net)

Junior Warden – Bob Zimmerman  
[stpaulsnajrwarden@comcast.net](mailto:stpaulsnajrwarden@comcast.net)

### Worship

Music Director – Ed Stauff  
[ed@mewsic.com](mailto:ed@mewsic.com)

Acolytes - John Brunette  
[jabrun@comcast.net](mailto:jabrun@comcast.net)

Worship Leaders/Lectors –  
The Rev. Stephanie Chase Wilson

Ushers - Dan Farmer  
[Defarmer1@verizon.net](mailto:Defarmer1@verizon.net)

Altar Guild - Marlene Smith  
[jack.marlene@myfairpoint.net](mailto:jack.marlene@myfairpoint.net)

### Fellowship

Coffee Hour - Joan Veznaian  
[joanievez@yahoo.com](mailto:joanievez@yahoo.com)

Christmas Fair - Diane & Ray Shaw  
[Diane.shaw@merrimack.edu](mailto:Diane.shaw@merrimack.edu) or  
[Raymond.shaw@merrimack.edu](mailto:Raymond.shaw@merrimack.edu)

Episcopal Church Women –  
Corky Jensen  
[coraliehj@verizon.net](mailto:coraliehj@verizon.net)

### Outreach

Outreach Chair – Cheryl Means  
[THREEMEANS@aol.com](mailto:THREEMEANS@aol.com)

### Inreach Pastoral Care

Transportation - Jack Smith  
(603)-382-8151  
[jack.marlene@myfairpoint.net](mailto:jack.marlene@myfairpoint.net)

### Christian Formation

Church School Director - Susan Johansson  
[frogsquad@comcast.net](mailto:frogsquad@comcast.net)

Assistant Church School Director –  
Lenore Schmidt  
[lpschmid@yahoo.com](mailto:lpschmid@yahoo.com)

### Property

Bob Zimmerman -  
[stpaulsnajrwarden@comcast.net](mailto:stpaulsnajrwarden@comcast.net)  
Tom Kookan - [tek108@comcast.net](mailto:tek108@comcast.net)

### Communications

Apostle Team - Lillian Carlson –  
978-683-6086

Apostle Creator – Amy Harley  
[amyharley22@yahoo.com](mailto:amyharley22@yahoo.com)

Web Master – Carrie Leary  
[carrievicens@hotmail.com](mailto:carrievicens@hotmail.com)

Historian – Tracy Wakeman  
(978)-686-2580 or  
[naswarden@comcast.net](mailto:naswarden@comcast.net)

### Parish Staff

Sextons – Don & Rusty Porter  
(978)-682-9930

Office Manager – Rene Heron  
[stpaulsna@comcast.net](mailto:stpaulsna@comcast.net)  
978-683-0671

Web page: [stpaulsnorthandover.com](http://stpaulsnorthandover.com)

Clergy - The Rev. Stephanie Chase Wilson  
[Stpaulsnarector@comcast.net](mailto:Stpaulsnarector@comcast.net)  
978-683-0671

## February 2010

Sunday	Monday	Tuesday	Wednesday	Thursday	Friday	Saturday
	<b>1</b> <b>6:30 PM</b> ECW (Room 3) <b>7:30 PM</b> Women's Love of Life - AA Meeting (Parish Hall)	<b>2</b> <b>7:30 PM</b> AA Meeting – Co-Ed Group (Parish Hall)	<b>3</b> <b>7:30 PM</b> Choir Practice	<b>4</b>	<b>5</b> <b>3-4:30 PM</b> CCP Alumni Day (Classroom)	<b>6</b>
<b>7</b> <b>8:30 AM</b> Holy Eucharist, Rite I <b>9:45 AM</b> Nursery Care <b>10:00 AM</b> Holy Eucharist, Rite II (Family Service) <b>11:30 AM</b> Parish Discussion on Same Gender Marriage (Lunch and Childcare Provided) <b>No Project Linus</b>	<b>8</b> <b>7-9:00 PM</b> Crafty Ladies (Kitchen) <b>7:30 PM</b> Women's Love of Life - AA Meeting (Parish Hall)	<b>9</b> <b>7:30 PM</b> AA Meeting – Co-Ed Group (Parish Hall)	<b>10</b> <b>3:30 – 5:00 PM</b> Daisy Troop Meeting (Parish Hall) <b>7:30 PM</b> Choir Practice	<b>11</b> <b>11:00 AM</b> Staff Meeting	<b>12</b> <b>6-9:00 PM</b> Game/Movie Night (French Memorial)	<b>13</b>
<b>14</b> <b>8:30 AM</b> Holy Eucharist, Rite I <b>9:45 AM</b> Church School & Nursery Care <b>10:00 AM</b> Morning Prayer, Rite II <b>11:30 AM</b> Junior Choir <b>No Project Linus</b>	<b>15</b> <b>Presidents' Day (Office closed)</b> <b>7-9:00 PM</b> Crafty Ladies (Kitchen) <b>7:30 PM</b> Women's Love of Life - AA Meeting (Parish Hall)	<b>16</b> <b>7:30 PM</b> AA Meeting – Co-Ed Group (Parish Hall)	<b>17</b> <b>Ash Wednesday</b> <b>12:00 PM</b> Ash Wed Service, HE, Rite I <b>7:00 PM</b> Ash Wed Service, HE, Rite I	<b>18</b> <b>7:00 PM</b> Women's Book Club	<b>19</b>	<b>20</b>
<b>21</b> <b>8:30 AM</b> Holy Eucharist, Rite I <b>9:45 AM</b> Nursery Care and Church School <b>10:00 AM</b> Holy Eucharist, Rite I (Lent 1) <b>11:30 AM</b> Junior Choir <b>6:30 – 8:00 PM</b> Project Linus	<b>22</b> <b>7-9:00 PM</b> Crafty Ladies (Kitchen) <b>7:30 PM</b> Women's Love of Life - AA Meeting (Parish Hall)	<b>23</b> <b>7:30 PM</b> AA Meeting – Co-Ed Group (Parish Hall)	<b>24</b> <b>3:30 – 5:00 PM</b> Daisy Troop Meeting (Parish Hall) <b>7:30 PM</b> Choir Practice	<b>25</b> <b>9:00 AM</b> Communities Together Mtg (French Memorial)	<b>26</b> Vestry Retreat Begins at Rolling Ridge	<b>27</b> Vestry Retreat
<b>28</b> <b>8:30 AM</b> Holy Eucharist, Rite I <b>9:45 AM</b> Church School & Nursery Care <b>10:00 AM</b> Morning Prayer, Rite I (Lent 2) <b>11:30 AM</b> Junior Choir <b>6:30 – 8:00 PM</b> Project Linus	<b>1</b> <b>6:30 PM</b> ECW (Room 3) <b>7:30 PM</b> Women's Love of Life - AA Meeting (Parish Hall)	<b>2</b> <b>7:30 PM</b> AA Meeting – Co-Ed Group (Parish Hall)	<b>3</b> <b>6:00 PM</b> Worship Planning Committee <b>7:00 PM</b> CCP Parent Ed Course <b>7:30 PM</b> Choir Practice	<b>4</b>	<b>5</b>	<b>6</b>